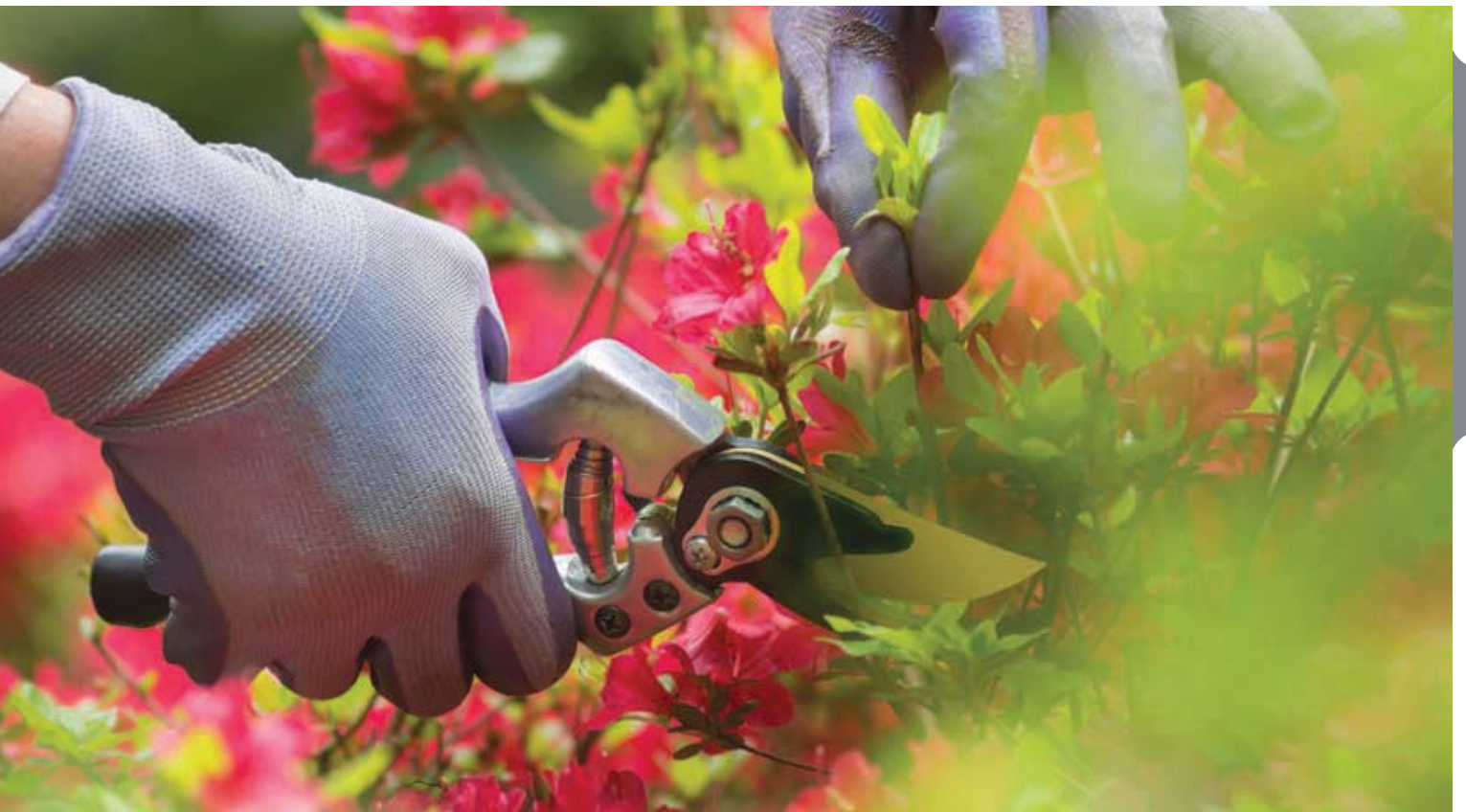


Pruning Techniques and Operation



Lesson #27

LANDSCAPE TECHNICIAN
BOOTCAMP



Landscape Technician Boot Camp

Lesson Title:

Pruning Techniques and Operation

Timeframe:

2 hours

**Outcomes
Expectations:**

After completing the training, the participant will be able to:

- Make proper pruning cuts using both hand and powered tools.
- Use pruning techniques for thinning, heading back, and rejuvenation.
- Deadhead flowers.
- Prune ornamental grasses.
- Select the right tool for the situation.
- Operate all tools and equipment in a safe and efficient manner.
- Sharpen blades/tools.

**Points of
Emphasis:**

After completing the training, the participant understands the importance and necessity for:

- Heading back
- Hedge width
- Rejuvenation
- Shearing
- Thinning
- Timing and bloom cycles

**Instructor
Qualifications:**

The instructor will have experience in this activity and have skills sets acquired from being a Landscape Industry Certified Professional, an experienced crew leader or account manager, a department manager, or a professional landscape instructor.

- The instructor may also be a manufacturer's representative of the equipment being used, with full knowledge of its operation.
- The instructor will possess excellent communication skills.



Landscape Technician Boot Camp

Lesson Title:

Pruning Techniques and Operation

Section:

Administration

**Before Class
Procedures:**

Lesson Plan

The instructor will review this lesson thoroughly prior to teaching the class.

Site Selection and Preparation

The instructor will perform the following tasks related to the site selection and its preparation:

- Assemble equipment/tools prior to teaching the class.
- Determine the site for the outdoor session.
 - Flowers for deadheading.
 - Hedges for shearing/pruning.
 - Large limb to demonstrate thinning cuts with hand pruning saw.
 - Ornamental grasses.
 - Shrub in need of shearing.
 - Small limbs to demonstrate reduction cut with hand pruners.
 - Tree large enough to demonstrate large limb removal.
 - Tree tall enough to demonstrate the pole pruner technique.
 - Tree with cross rubbing branches, competing limbs, dead broken branches, etc.

NOTE: The site should allow for the full teaching of multiple pruning techniques, situations, and conditions, utilizing all the tools available.

**Materials
Needed:**

The instructor will ensure all materials are available for the pruning session.

Materials	
Files, sharpening stones	Rags
Flagging tape	Trees with rubbing branches, competing limbs, dead broken branches, narrow crotches, water sprouts, etc.
Gasoline or batteries for powered equipment	Trees tall enough for teaching pole pruner techniques
Owner's/Operator's manual for powered equipment	WD 40



Landscape Technician Boot Camp

Lesson Title:

Pruning Techniques and Operation

Section:

Administration

**Equipment
and Tools:**

The instructor will ensure all the equipment and tools are available for the pruning session.

Equipment and Tools	
Bow saw	Pole pruners
Fuel and batteries for the powered equipment	Pole saw
Hand pruners (bypass)	Powered hedge trimmers (gas or battery)
Hand pruners (saws)	Screwdriver set
Hedge shears	Wrench set
Loppers	

**PPE and
Safety:**

PPE and Safety Items

The instructor will ensure there is enough PPE for the outdoor session.

PPE Items	Safety Items
Appropriate work clothes and footwear	Eye wash
Ear protection	Fire extinguisher
Hard hat	First aid kit
Leather gloves	Red safety flag
Safety glasses	
Safety vest	
Trimmer chaps	



Landscape Technician Boot Camp

Lesson Title:

Pruning Techniques and Operation

Section:

Classroom – For Study

**Reference
Guide:**

The instructor will review the following material prior to conducting the session.

Topic	Chapter	Manual
Pruning	Chapter 7	<i>Landscape Training Manual for Maintenance Technicians</i>

**Evaluation
Questions:**

The instructor will use the evaluation questions to assess comprehension during the classroom and outdoor sessions.

- Why is shearing not always appropriate?
- Why is hand pruning preferred?
- Why is the timing of pruning important?
- When should I use the three-cut method?
- Why should a hedge be wider at the bottom than the top?
- Why should I use bypass hand pruners and not anvil hand pruners?
- What size cuts can be made with lopping shears?

**Additional
References:**

Resource	Author
Extension Publications Available in Your State	
<i>Landscape Training Manual for Maintenance Technicians</i>	National Association of Landscape Professionals
Owner's/Operator's Manual for Power Trimmers Being Used	
<i>Pruning Ornamental Plants in the Landscape</i>	UGA Extension Publication
Pruning Ornamental Plants in the Landscape Part 2	UGA Super Crew Video Series
Pruning Ornamental Plants in the Landscape Part I	UGA Super Crew Video Series
Videos on Trimmer Operation (Check Manufacturer or YouTube)	



Landscape Technician Boot Camp

Lesson Title:

Pruning Techniques and Operation

Section:

Classroom – For Instruction

**Safety
Statement:**

During the classroom session, the instructor will read the following Safety Statement in preparation for the outdoor session.

- The safe use of tools and equipment includes the usage of any tool or equipment in a manner that keeps all persons free from any harm or risk to health and welfare and the property free from unintended damage.
- Safe use of tools and equipment shall ensure that no harm, threat, or danger to people or property is experienced or perceived by any participant. Participant will always wear safety vests and the appropriate PPE for the activity.
- Safe use of tools includes good housekeeping practices, such as maintaining tidy and orderly worksites, shops, and office areas; depositing waste and debris in appropriate collection receptacles; storing hand tools properly whether or not in use (i.e., rakes placed with tines down, shovels placed with blades down, pruners sheathed or locked when not being safely used, etc.); maintaining clear pedestrian paths with tools stored so as not to cause potential trip hazards or other unforeseen dangers; and placing charged fire extinguishers and well-supplied first aid kits in prominent locations.
- Safe use of equipment includes operating equipment that has been thoroughly inspected by an operator and, in the operator's best judgment, is deemed serviceable for its intended use; never leaving a running piece of equipment unattended; fueling only when the engine is cool and not running; starting equipment in the manufacturer's recommended state (such as clutches engaged or disengaged, transmissions in neutral, power take-offs disengaged, etc.); staying alert for problems with the surrounding terrain; being aware of all pedestrian activity around the operating area; shutting off and parking or storing equipment per manufacturer's recommendations; and only operating equipment on which the operator has been trained.
- Participants will always operate under the safe practices and procedures as outlined in the manufacturer's operator's/owner's manuals and following state and federal regulations and trade practices, including using the tools or equipment for their designed and intended purpose.



Landscape Technician Boot Camp

Lesson Title:

Pruning Techniques and Operation

Section:

Classroom – For Instruction

**Equipment
Statement:**

During the classroom session, the instructor will review the Equipment and Tool Statement.

- Each brand and model of equipment and/or tool is different. Make sure you are familiar with the equipment you are operating and the tools you are using. Refer to the operator's manual for all operating procedures.

**Learning
Segment:**

During the classroom session, the instructor will review the Learning Segment, offer an answer to each of the Evaluation Questions, and use the Points of Emphasis to assess understanding.

- The appropriate PPE for the pruning operation, which includes work clothing and footwear.
 - Ear protection
 - Hard hat
 - Leather gloves
 - Safety glasses
 - Safety vest
 - Trimmer chaps
- The pruning tools for the outdoor session.
 - Floral scissors and snips, Grass shears
 - Hand pruner, Hedge shear
 - Lopper, Pole pruner
 - Tree pruner
- The pruning techniques for the outdoor session.
 - Heading, Pinching
 - Rejuvenation, Shearing
 - Thinning, Three-cut method
- How to direct new growth according to bud placement.
- Timing and how it affects growth and bloom cycles.
- Conifer pruning and how regrowth may not occur if procedures are not followed correctly.
- Hedges and their shapes



Landscape Technician Boot Camp

Lesson Title:

Pruning Techniques and Operation

Section:

Outdoor Procedures

**Instructor
Tips:**

During the outdoor lab, the instructor will select participants to be on the working crew. The instructor will:

- Constantly talk to the entire class, teaching and reinforcing the proper techniques and methods demonstrated by the participants.
- Ensure all instructional comments are constructive and teaching in nature.
- Periodically change crews to involve more participants.
- Refrain from negative comments.
- Stop the crew at any point and ask the other participants (non-working crew) for feedback on the quality of the Pruning session.
- Stop the learning segment if unsafe practices are demonstrated.

**Outdoor
Lab:**

During the outdoor lab, the instructor will reinforce the classroom procedures for the outdoor session.

Personal Protection Equipment (PPE)

The working crew is instructed to put on their PPE, which includes work clothing and footwear.

- Ear protection
- Hard hat
- Leather gloves
- Safety glasses
- Safety vest
- Trimmer chaps

Site Inspection

The working crew is instructed to perform a site inspection.

- Check the work area for obstacles, pedestrians, or hazards.
- Check the trees for bird's nests, squirrel's nests, hornet's nest, etc.
- Watch for other workers in the area.



Landscape Technician Boot Camp

Lesson Title:

Pruning Techniques and Operation

Section:

Outdoor Procedures

**Outdoor
Lab:**

Pruning Tools

Hand Pruners

The instructor will demonstrate how to use hand pruners. After the demonstration, the working crew will:

- Identify the shrub and hedge.
- Use the hand pruners to head back the shrub.
- Use the hand pruners to thin the shrub.
- Use the hand pruners to tighten up the hedge.

Hedge Sheers

The instructor will demonstrate how to use hedge sheers. After the demonstration, the working crew will:

- Use both hand and powered hedge sheers to prune/shear the shrubs, maintaining the proper height, width, and overall shape.

Loppers

The instructor will demonstrate how to use the loppers. After the demonstration, the working crew will:

- Identify the shrub for the job.
- Use the loppers to head back the shrub.
- Use the hand pruners to thin the shrub.

Pruning Methods

The instructor will demonstrate rejuvenation pruning. After the demonstration, the working crew will:

- Deadhead flowers.
- Eliminate crossing branches.
- Eliminate dead, damaged, or diseased branches.
- Prune conifers.
- Prune larger tree limbs using the three-cut method.
- Prune perennial flowers.
- Prune ornamental grasses.



Landscape Technician Boot Camp

Lesson Title:

Pruning Techniques and Operation

Section:

Outdoor Procedures

**Outdoor
Lab:**

Equipment/Tool Maintenance and Storage

The working crew is instructed on how to perform equipment maintenance and storage according to the operator's manual.

Maintenance

- Discuss/demonstrate the sharpening of tool blades.

Storage

- Clean tools and equipment, as necessary.
- Return tools and equipment to proper storage.



Landscape Technician Boot Camp

Lesson Title:

Pruning Techniques and Operation

Section:

Outdoor Procedures

Plan
Specification:

PRUNING – SITE LAYOUT

