

CHOOSE YOUR CAREER PATH

MATCH YOUR PERSONALITY TO YOUR DREAM CAREER IN THE PROFESSIONAL LANDSCAPE INDUSTRY

IF YOU ARE PATIENT AND DETAILED...

ACCOUNTING SPECIALIST

Collect, track and communicate the financial position of a landscape business.

- ✔ Organized and methodical
- ✔ Business acumen

LANDSCAPE PURCHASER

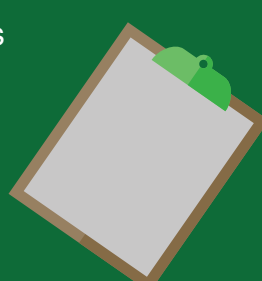
Work with designers, estimators and contractors to ensure each job has the best products available at the best price.

- ✔ Strong negotiation skills
- ✔ Interpersonal skills

LANDSCAPE ESTIMATOR

Calculate costs for landscaping projects using specialized technology including drones and estimating software.

- ✔ Detail-oriented and thorough
- ✔ Remarkable mathematical skills



IF YOU ARE CREATIVE AND INNOVATIVE...

LANDSCAPE DESIGNER

Create beautiful landscape designs for families, businesses and municipalities.

- ✔ Eye for detail
- ✔ Artistic



INTERIOR LANDSCAPING PROFESSIONAL

Bring the outdoors in by installing and maintaining plants indoors, primarily in commercial locations.

- ✔ Passion for design
- ✔ Appreciation for plants

HARDSCAPE TECHNICIAN

Build and install hardscape projects including patios, walkways, steps and retaining walls.

- ✔ Excellent planning skills
- ✔ Enjoys hands-on work

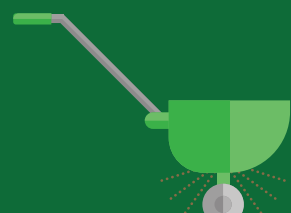


IF YOU DON'T WANT TO WORK A TYPICAL 9-5 DESK JOB...

LAWN CARE TECHNICIAN

Evaluate and diagnose problems and treat lawns by applying fertilizer and turf care products.

- ✔ Problem-solving skills
- ✔ Excellent customer service



IRRIGATION TECHNICIAN

Install irrigation systems in residential and commercial environments as well as for municipalities and sports turf areas.

- ✔ Passion for the environment
- ✔ Interest in cutting-edge technology

MAINTENANCE FOREMAN

Manage a crew of skilled landscape maintenance workers in residential and commercial settings.

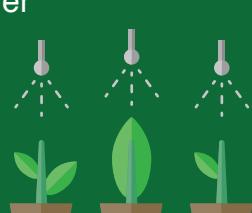
- ✔ Adaptable and flexible
- ✔ Leadership qualities



LANDSCAPE MECHANIC

Service high-tech landscape equipment and machinery.

- ✔ Enjoys hands-on tasks
- ✔ Problem-solver



IRRIGATION AUDITOR

Inspect irrigation systems to ensure they perform at maximum efficiency.

- ✔ Interest in smart technology
- ✔ Analytical mindset

EQUIPMENT OPERATOR

Operate forklifts and bulldozers to move dirt, dig holes and carry heavy objects.

- ✔ Attention to detail
- ✔ Natural hand-eye coordination



IF YOU LIKE TO WORK INDEPENDENTLY...

IF YOU ARE ALWAYS ON THE MOVE...

ARBORIST

Maintain trees to ensure health and safety.

- ✔ Enjoys physical work
- ✔ Comfortable with heights



NURSERY/GREENHOUSE OPERATOR

Grow beautiful, healthy flowers and plants used by landscape companies and homeowners.

- ✔ Interest in biology
- ✔ Green thumb

RECRUITING SPECIALIST

Identify, attract and hire qualified candidates for landscaping companies.

- ✔ Outgoing and friendly
- ✔ Passion for the industry



BUSINESS DEVELOPMENT MANAGER

Build long-term relationships with clients to drive business for the company.

- ✔ Motivation for corporate growth
- ✔ Love for the environment

ACCOUNT MANAGER

Supervise service for customer accounts, including management of crews and technicians.

- ✔ Ability to multitask
- ✔ Ability to delegate responsibilities

INDUSTRY SUPPLIER

Supply plant material, fertilizer, control products, irrigation systems, maintenance equipment and more.

- ✔ Team player
- ✔ Effective communicator



IF YOU ARE A NATURAL TEAM LEADER...

LANDSCAPE PROJECT MANAGER

Serve as the company's eyes and ears on project sites, ensuring work is done according to plan.

- ✔ Problem-solving skills
- ✔ Outstanding communication skills

LANDSCAPE SUPERVISOR

Responsible for managing field operations on job sites, including the coordination of resources such as labor, equipment and materials.

- ✔ Time management skills
- ✔ Works well under pressure

LANDSCAPE BUSINESS OWNER

Oversee all aspects of a landscape company, from project administration and environmental stewardship to sales and business management.

- ✔ Knowledge of the industry
- ✔ Experience managing finances



NATIONAL ASSOCIATION OF
LANDSCAPE PROFESSIONALS

WANT MORE INFO?

There's more to explore! Each person who enters the landscape profession is on the path to developing strong skills, earning a competitive salary, enhancing the environment and transforming the places where we live and work.

What's more, it's an industry that is all about team work. Check out resources and find job openings at

LANDSCAPEINDUSTRYCAREERS.ORG



@WHYLANDSCAPE